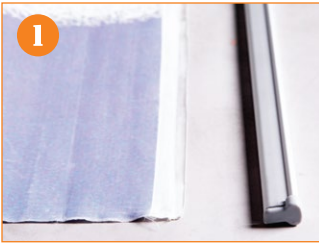


# BT-2E

## Instructions for Graphic Installation



1. Arrange the graphic and the top bar so they are parallel to each other.



2. Remove the end caps on both sides.



3. Open the top bar.



4. Insert the graphic into the top bar and press to close.



5. Insert the end caps on both sides.



6. Arrange the graphic and the base leader parallel to each other.



7. Peel off the adhesive paper.



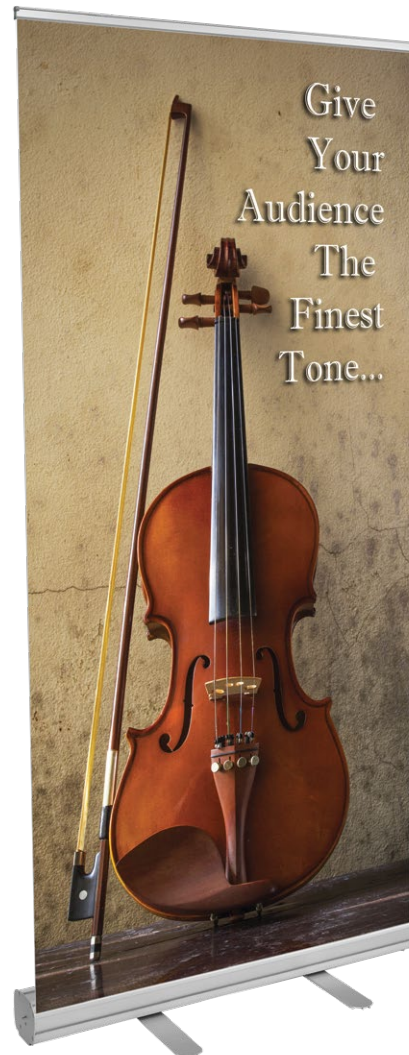
8. Attach the base of the graphic on top of the adhesive and press firmly to secure.



9. Hold the graphic and remove the spring key.



10. Slowly retract the graphic into the base.



# BT-2E

## Instructions for Display Unit



1. Persto Black padded bag.



2. Take out the base from the bag.



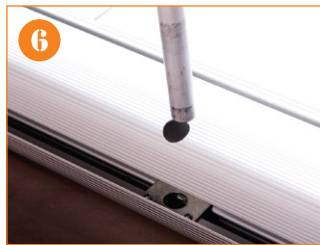
3. Take out the pole from the base.



4. Connect the 4 section pole.



5. Turn both feet sideways to secure the base.



6. Insert the pole into the base.



7. Attach the top bar on the top clamp profile.

